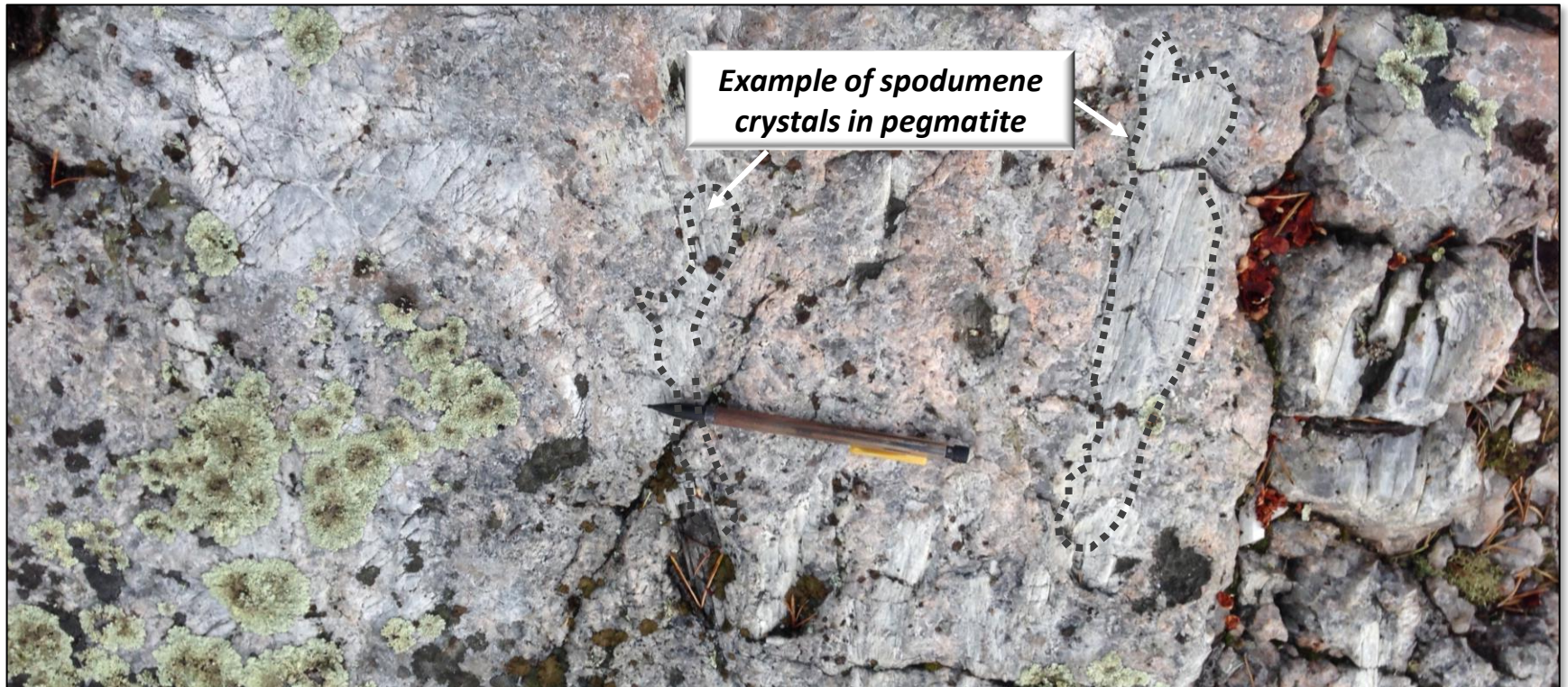


Kaba Lithium Property Nipigon, Ontario



Technical content has been reviewed and approved by Mr. Michael Kilbourne, P. Geo., who is a Qualified Person as defined by National Instrument 43-101, Standards of Disclosure for Mineral Projects.

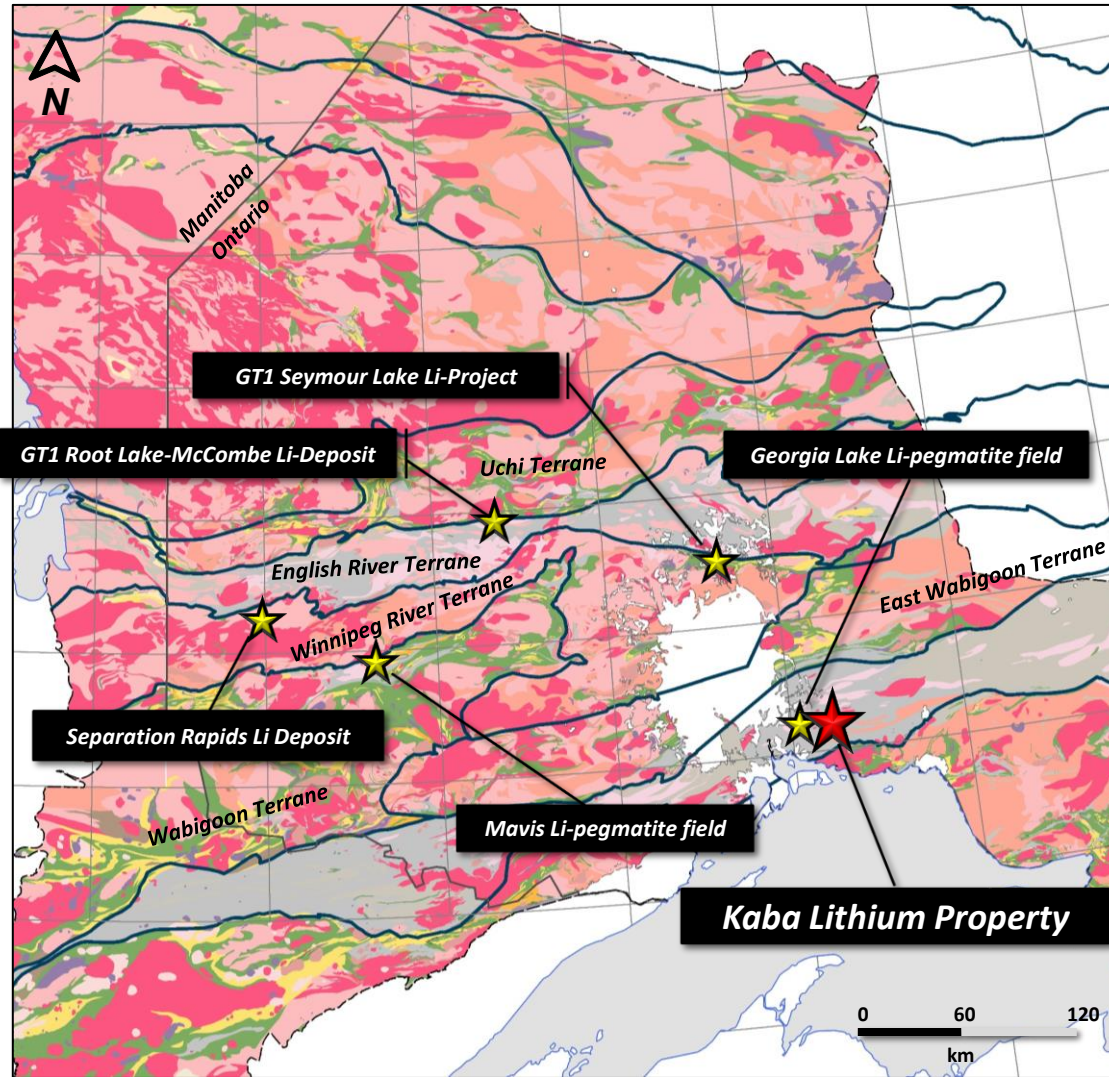
Property Summary

- The Kaba Lithium Property consists of 9 claims comprising 3,486 hectares.
- The Property is located 50 km northeast of Nipigon, Ontario with good highway and logging road access.
- The Kaba Lithium Property is 18 km east of the Georgia Lake Pegmatite Field where several lithium deposits occur. These deposits are being explored and developed by Rock Tech Lithium, Ultra Lithium and Infinite Ore Corp.
- The Property contains a muscovite-bearing, S-type peraluminous fertile parental granite in contact with metasediments, both of which are excellent targets for Li-pegmatites. Numerous faults transect the Property providing ideal pathways for granitic melts and evolving pegmatites.
- Breaks et al., 2008 described the Georgia Lake Pegmatite Field as the largest concentration of rare element mineralization in the Superior Province and recommended further exploration.
- Several white pegmatites with garnet and tourmaline were documented and mapped on the Property by the Ontario Geological Survey in 1970. These are further strong indicators of fertile granitic melts and fractionation – ideal for lithium- & rare element-bearing pegmatite deposition.

Kaba Li-Property Location

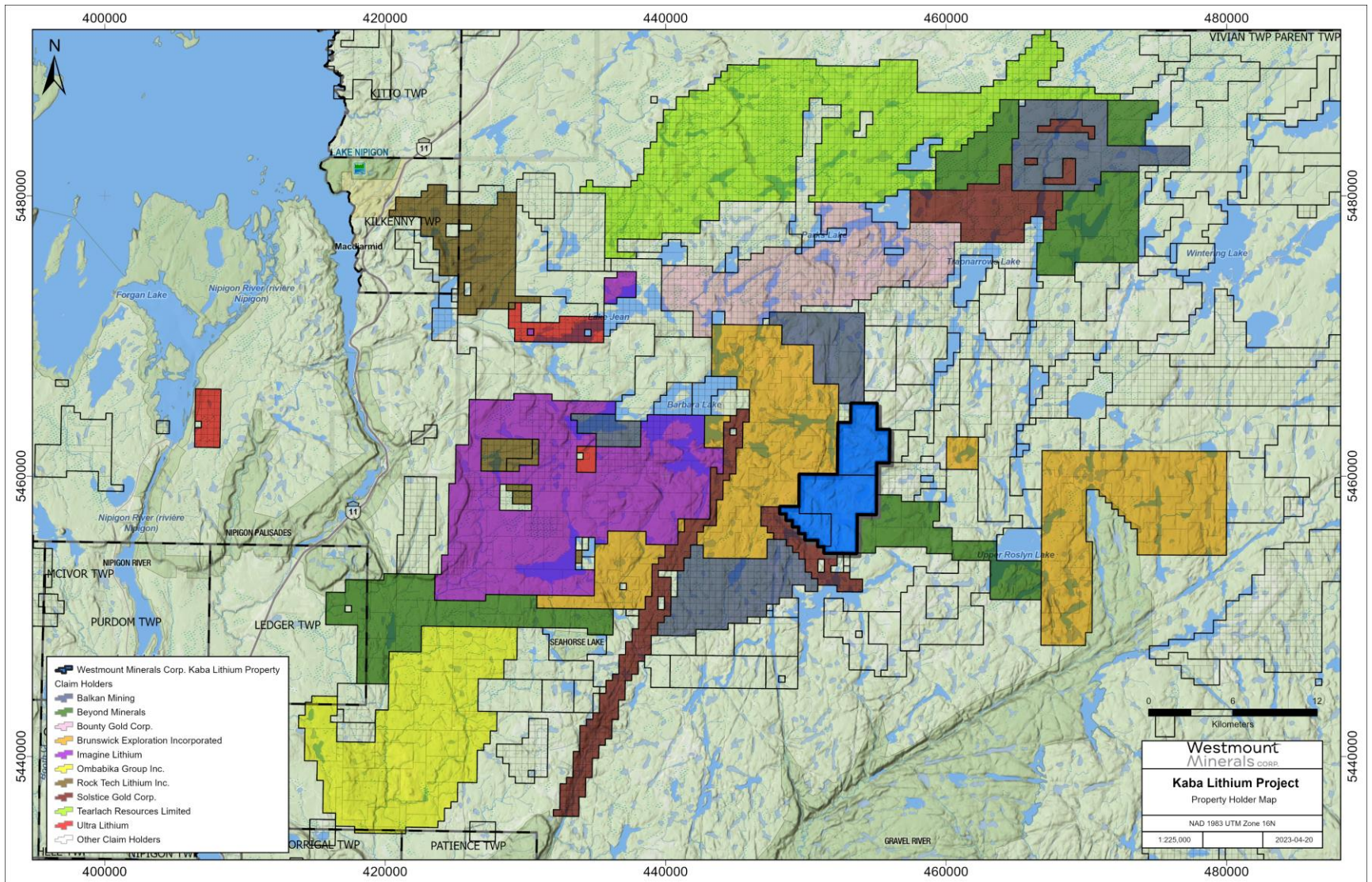


Northwestern Ontario - Geology

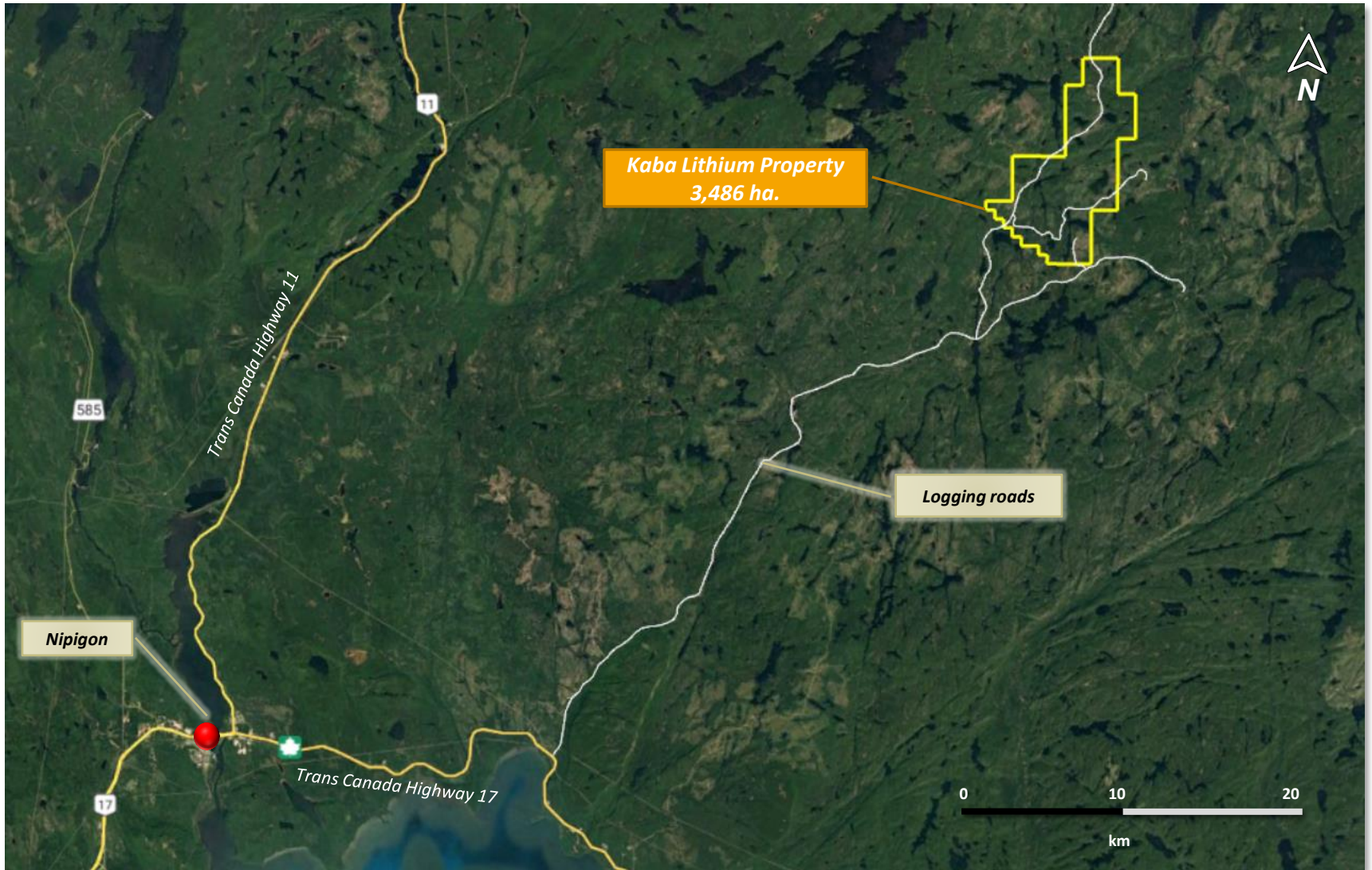


- The Kaba Lithium Property is located in northwestern Ontario where numerous lithium deposits have been delineated to host significant reserves of Li_2O .
- The Property is located just 18 km east of several lithium deposits and occurrences of the Georgia Lake pegmatite field.
- Significant lithium deposits of northwestern Ontario include:
 - The Seymour Lake Lithium Project owned by Green Technology Metals Ltd. (GT1) hosts 9.9Mt grading 1.04% Li_2O and 137ppm Ta_2O_5 .
 - The Georgia Lake pegmatite field with estimated resources of 16*Mt of Li_2O owned by Rock Tech Lithium and Infinite Ore.
 - Separation Rapids Lithium deposit owned by Avalon Advanced Materials with resources of 9.4Mt grading 1.35% Li_2O .

Kaba Li-Property Holder Map



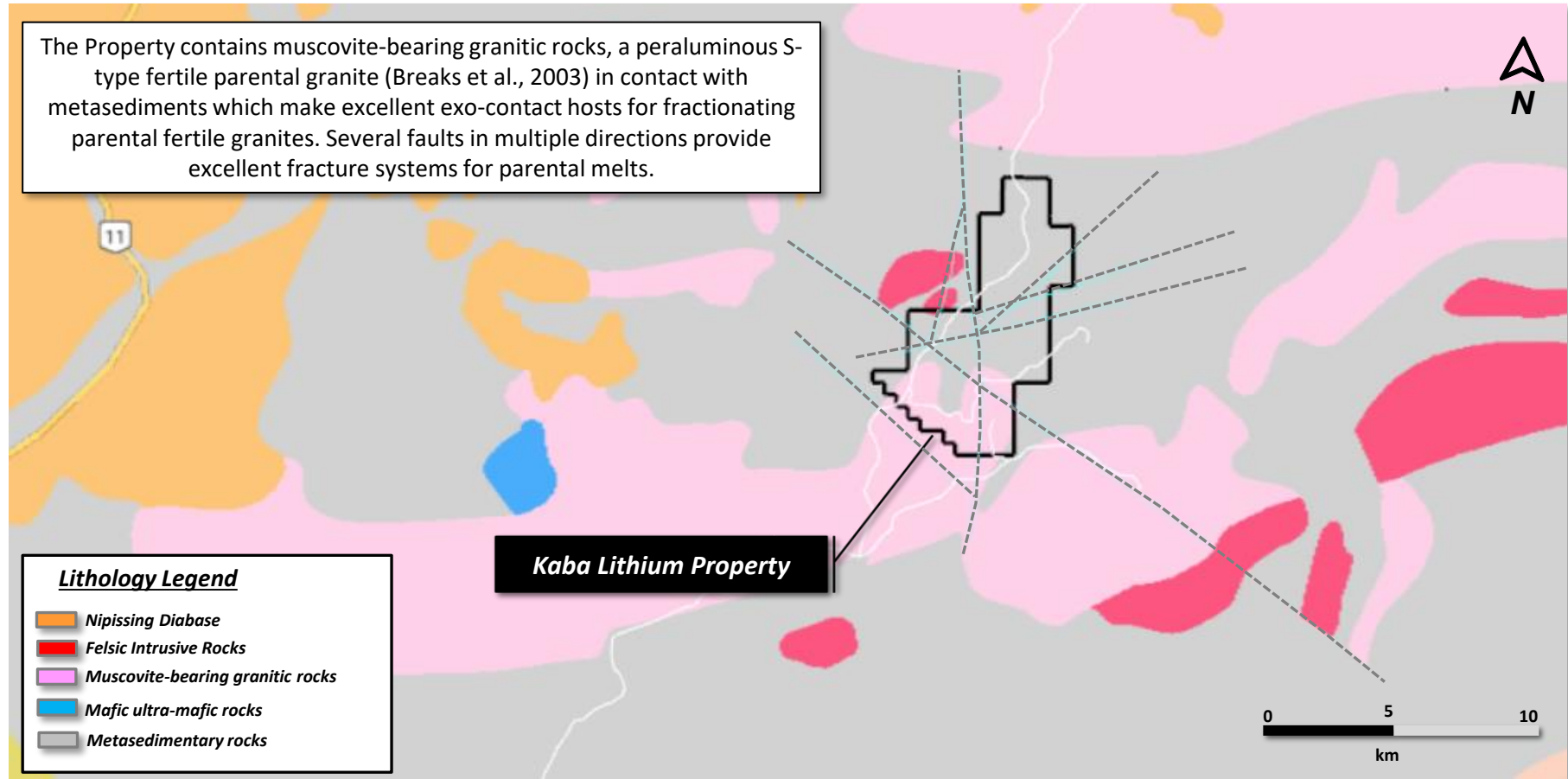
Location and Access



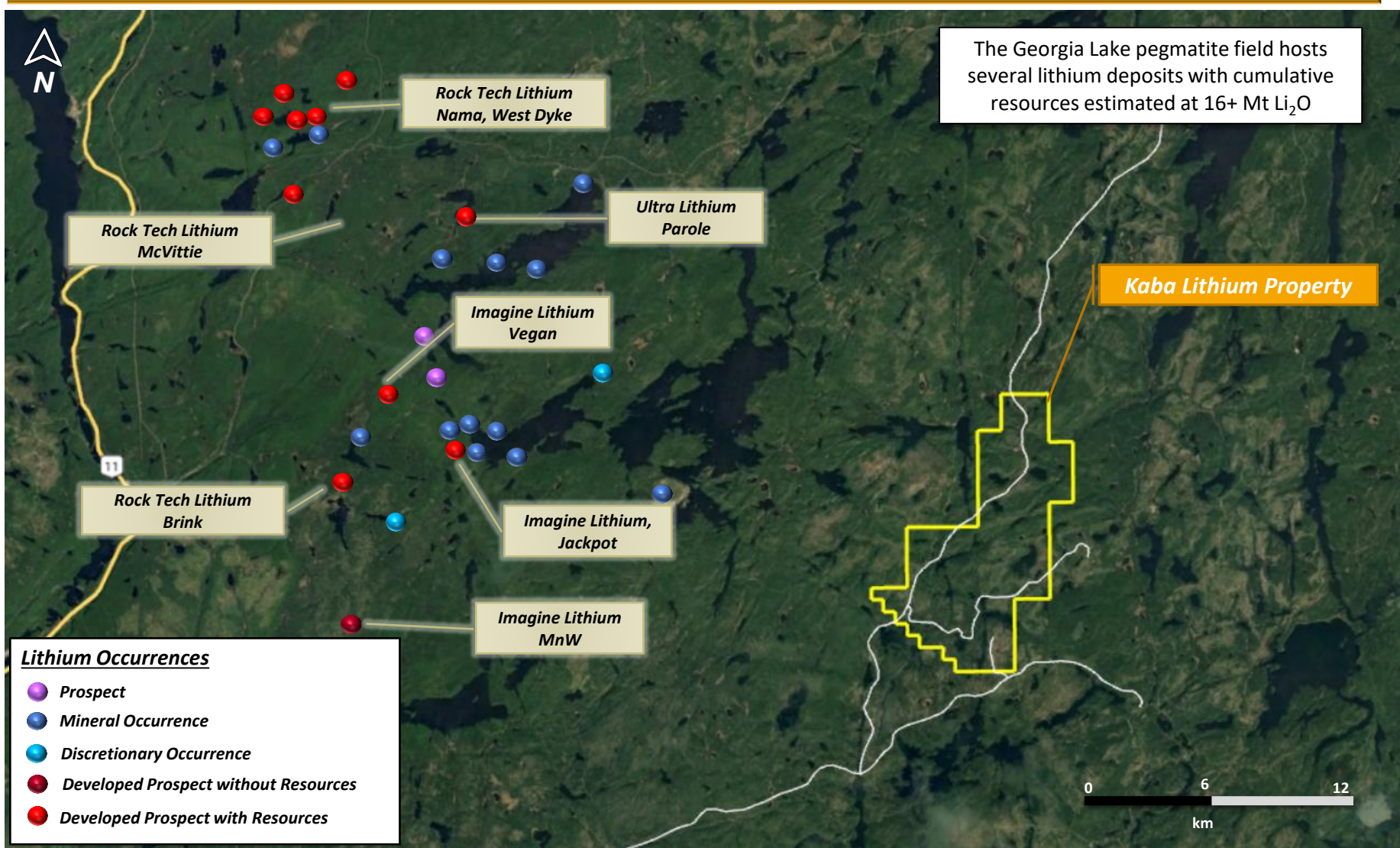
- Excellent highway and logging road access.

Kaba Regional Geology

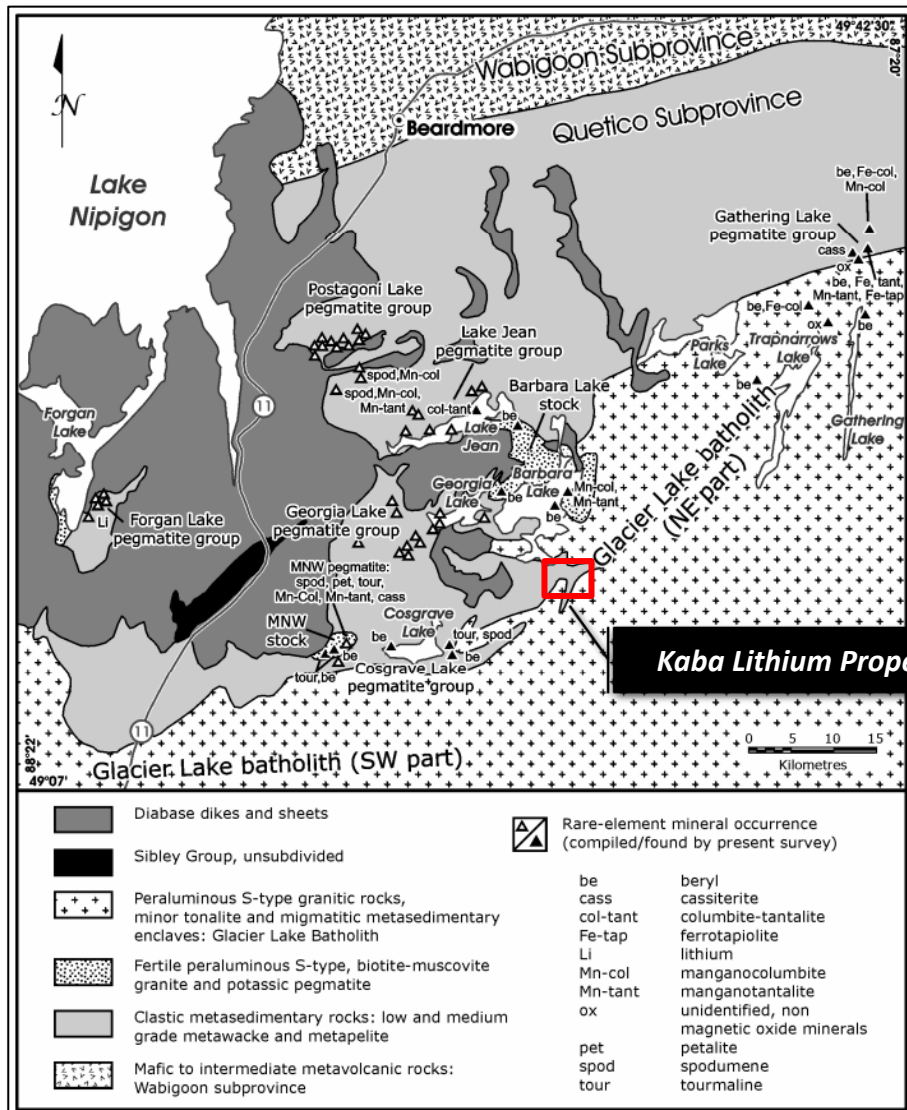
The Property contains muscovite-bearing granitic rocks, a peraluminous S-type fertile parental granite (Breaks et al., 2003) in contact with metasediments which make excellent exo-contact hosts for fractionating parental fertile granites. Several faults in multiple directions provide excellent fracture systems for parental melts.



Lithium Deposits of the Georgia Lake Pegmatite Field



Georgia Lake Pegmatite Field, Breaks et al., 2008.



- The Georgia Lake pegmatite field represents the largest concentration of rare-element mineralization in the Superior Province of Ontario.
- The 32 x 105 km pegmatite field hosts 38 rare-element occurrences and 10 spodumene pegmatite deposits.
- Breaks et al., 2008 discovered 19 additional rare-element occurrences and recommended additional exploration proximal and along the Glacier Lake Batholith bodies in contact with metasediments.

OGS mapped pegmatites on the Kaba Lithium Property.

Several white and pink pegmatites with garnet, tourmaline and biotite were mapped by the OGS in 1970 on the Property (OGS Map 2293). These occur in the muscovite granites and the metasediments in contact. Garnets and tourmaline in white pegmatites are good mineral indicators of evolved pegmatites.

